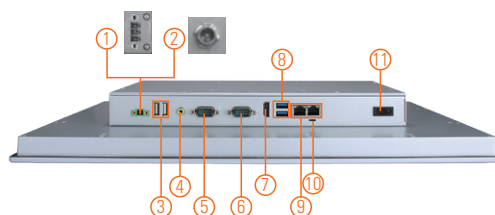
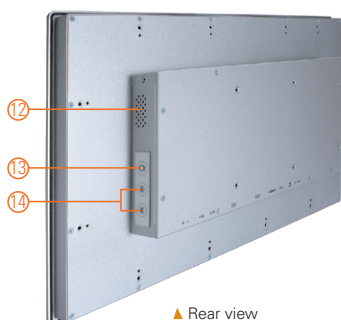
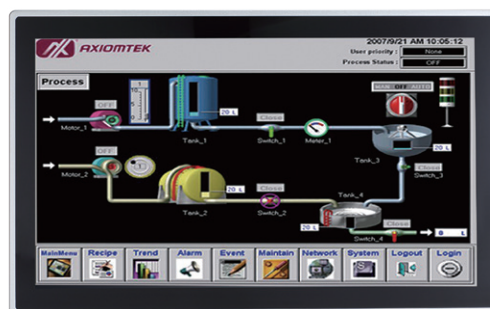


# GOT318WL-845

18.5" WXGA TFT Multi-touch Panel Computer with Intel® Pentium® Processor N3710 (0°C to +50°C)

## Features

- 18.5" WXGA projected capacitive multi-touch wide screen/  
Flat resistive touch (optional)
- Fanless design with Intel® Pentium® processor N3710
- 2.5" SATA HDD & mSATA
- 3G, WLAN module & antennas (optional)
- 2 GbE LANs, 2 USB 3.0, 2 USB 2.0 and 2 COM
- IP65 aluminum front bezel
- Supports panel mount and optional VESA arm/desktop stand/  
wall mount
- Adjust RS-232/422/485 setting via BIOS



- |   |                              |                           |
|---|------------------------------|---------------------------|
| 1. Terminal block for DC power input or | 6. COM 2 (RS-232)            | 12. Speaker               |
| 2. Screw conn. w/ AC power adapter      | 7. HDMI output               | 13. Backlight switch      |
| 3. USB 2.0 x 2                          | 8. USB 3.0 x 2               | 14. Brightness adjust +/- |
| 4. Audio (Line-out)                     | 9. Ethernet x 2              |                           |
| 5. COM 1 (RS-232/422/485)               | 10. AT/ATX selectable switch |                           |
|   | 11. Power switch (ATX)       |                           |



## Introduction

The GOT318WL-845 adopts a 18.5-inch WXGA LCD and supports Intel® Braswell processor. The Lite rugged industrial panel PC supports low power Intel® Pentium® processor N3710. It also provides two PCI Express Mini Card slots for 3G, wireless network connectivity. This 18.5" multi-touch panel computer is suitable for transportation, heavy-duty industry, smart factory automation, and oil pipe monitoring systems.

### 18.5-inch WXGA LCD with Projected Capacitive Multi-touch

The 18.5" WXGA touch panel PC supports 250 nits brightness, able to display contents in HD resolution. With projected capacitive multi-touch screen, users can operate the device more directly and friendly. The hardness of touch glass surface is up to 7h for anti-scratch purpose.

### WLAN Antenna Supported (optional)

The IP65-rated industrial panel PC, GOT318WL-845, provides two PCI Express Mini Card slots and WLAN antennas for 3G and wireless network connectivity.

## Specifications

Front Bezel	IP65 front bezel	
LCD Panel	Display Type	18.5" WXGA TFT LCD
	Brightness (cd/m <sup>2</sup> )	250 nits
	Resolution	1366 x 768
Main System	CPU	Intel® Pentium® processor N3710 4C @ 1.6 GHz (Braswell)
	Chipset	SoC Integrated
	System Memory	1 x 204-pin DDR3L-1333/1600 SO-DIMM, up to 8GB
	BIOS	AMI UEFI BIOS
	Storage	1 x 2.5" SATA HDD 1 x mSATA
	Watchdog Timer	255 levels, 0 - 255 sec.
	Onboard Graphics	Integrated Intel® HD Graphics

## Specifications

I/O Connector	1 x RS-232 (COM 2) 1 x RS-232/422/485 (COM 1) 1 x switch for power on/off (ATX) 1 x audio (Line-out) 2 x USB 3.0 2 x USB 2.0 2 x 10/100/1000 Mbps Ethernet (Intel® i217LM & i210AT)
Expansion Interface	1 x full-size PCI Express Mini Card slot with mSATA 1 x full-size PCI Express Mini Card slot with SIM
Touchscreen	Projected capacitive multi-touch / Flat resistive touch (optional)
Power Supply	1. DC version: 24 VDC 2. AC version: 12 VDC 60W adapter
Power Consumption	48 W
Dimensions	460.8 mm (18.11") (W) x 58.5 mm (2.3") (D) x 285 mm (11.22") (H)
Packing Dimensions	600 mm (23.58") (W) x 195 mm (7.67") (D) x 500 mm (19.68") (H)
Weight (net/gross)	5.8 kg (12.8 lb)/8.2 kg (18.1 lb)
Environment	Operating temperature: 0°C ~ +50°C (+32°F ~ +122°F) Relative humidity: 20% ~ 90% @ +40°C; non-condensing Operation vibration: 1G, 10 ~ 500 Hz, random for 2.5" SATA HDD
Certificate	CE

## Ordering Information

GOT318WL-845-PCT-J	18.5" WXGA TFT fanless touch panel computer with Intel® Pentium® N3710 1.6 GHz quad core processor, projected capacitive multi-touch screen and AC-DC 12 VDC power adapter (screw type connector)
GOT318WL-845-PCT-DC	18.5" WXGA TFT fanless touch panel computer with Intel® Pentium® N3710 1.6 GHz quad core processor, projected capacitive multi-touch screen and 24 VDC terminal block connector

## Optional Accessories

82231770050E	GOT3177T-834 wall mount kit
50906D24000E	Adaptor 24V/120W, wire only, FSP120-AAAN3

## Optional EOS Installation

Windows® 10 IoT Enterprise (64-bit)

## Optional OS Installation

Windows® 10 (64-bit)

## Dimensions

