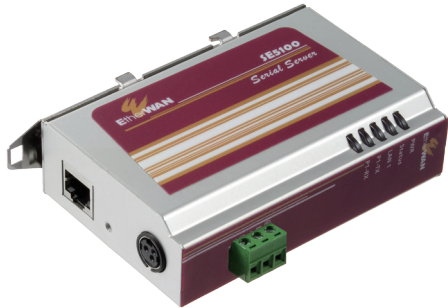
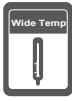


SE5100 Series

Industrial 1-port Serial Device Server



Value

- › Best industrial model for serial to Ethernet data transmission with various communication modes
- › Serial interface with optical isolation protection is available

Features

- › Supports RS-232/422/485 serial communication
- › Equipped with 2KV optical isolation protection and 15KV ESD surge protection of serial interfaces
- › Supports RJ45 and single-mode/multi-mode fiber optics through SC and ST fiber connector
- › 256Kb Memory buffer prevents data loss when connection fails
- › Supports Virtual COM, TCP server, TCP client, UDP, and Pair Connection
- › Multiple configuration interfaces: Web, Telnet console, SNMP and windows-based utility
- › Both Terminal Block and latch secure DC Jack power inputs are provided for flexible power connectivity
- › Aluminum housing with flexible installation by DIN-Rail, panel and wall mounting

Ordering Information

SE5101-00B	1-port RS-232/422/485 Serial Device Server with 1-port 10/100BASE-TX
SE5101-1XB	1-port RS-232/422/485 Serial Device Server with 1-port 100BASE-FX
SE5110-00B	1-port isolated RS-422/485 Serial Device Server with 1-port 10/100BASE-TX
SE5110-1XB	1-port isolated RS-422/485 Serial Device Server with 1-port 100BASE-FX

100FX Fiber Options :

- (X) = 1 : Multi Mode (SC) - 2Km (1310nm)
 2 : Multi Mode (ST) - 2Km (1310nm)
 A : Single Mode (SC) - 20Km (1310nm)
 B : Single Mode (SC) - 40Km (1310nm)
 H : Single Mode (ST) - 20Km (1310nm)

Power Supply : (Optional)

*Option A - The Terminal Block type external power supply are not included. Please order the following part numbers:

DR-30-24, DR-60-24, DR-75-24, DR-120-24 or 41-136046-X (X)=1: US, 2: EU, 3: UK, 4: AU, 5: JP

**Option B - The external power adapter and power cord are not included. Please order the following part numbers:

41-136044-X (X)=1: US, 2: EU, 3: UK, 4: AU, 5: JP

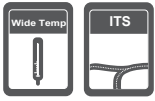
Installation Type : DIN-Rail (mounting kit included)

Optional Panel mount kit, part number: KP-AA51



SE6100 Series

Hardened 1-port Serial Device Server



Value

- › Best hardened model for serial to Ethernet data transmission with various communication modes
- › Serial interface with optical isolation protection is available
- › Wide operation temperature specification supports harsh environment applications

Features

- › Supports RS-232/422/485 serial communication
- › Equipped with 2KV optical isolation protection and 15KV ESD surge protection of serial interfaces
- › Supports RJ45 and single-mode/multi-mode fiber optics through SC and ST fiber connector
- › 256Kb Memory buffer prevents data loss when connection fails
- › Supports Virtual COM, TCP server, TCP client, UDP, and Pair Connection
- › Multiple configuration interfaces: Web, Telnet console, SNMP and windows-based utility
- › Both Terminal Block and latch secure DC Jack power inputs are provided for flexible power connectivity
- › Aluminum housing with flexible installation by DIN-Rail, panel and wall mounting

Ordering Information

SE6101-00B	1-port RS-232/422/485 Serial Device Server with 1-port 10/100BASE-TX
SE6101-1XB	1-port RS-232/422/485 Serial Device Server with 1-port 100BASE-FX
SE6110-00B	1-port isolated RS-422/485 Serial Device Server with 1-port 10/100BASE-TX
SE6110-1XB	1-port isolated RS-422/485 Serial Device Server with 1-port 100BASE-FX

100FX Fiber Options :

- (X) = 1 : Multi Mode (SC) - 2Km (1310nm)
 2 : Multi Mode (ST) - 2Km (1310nm)
 A : Single Mode (SC) - 20Km (1310nm)
 B : Single Mode (SC) - 40Km (1310nm)
 H : Single Mode (ST) - 20Km (1310nm)

Power Supply : (Optional)

*Option A - The Terminal Block type external power supply are not included. Please order the following part numbers:

DR-30-24, DR-60-24, DR-75-24, DR-120-24 or 41-136046-X (X)=1: US, 2: EU, 3: UK, 4: AU, 5: JP

**Option B - The external power adapter and power cord are not included. Please order the following part numbers:

41-136044-X (X)=1: US, 2: EU, 3: UK, 4: AU, 5: JP

Installation Type : DIN-Rail (mounting kit included)

Optional Panel mount kit, part number: KP-AA51



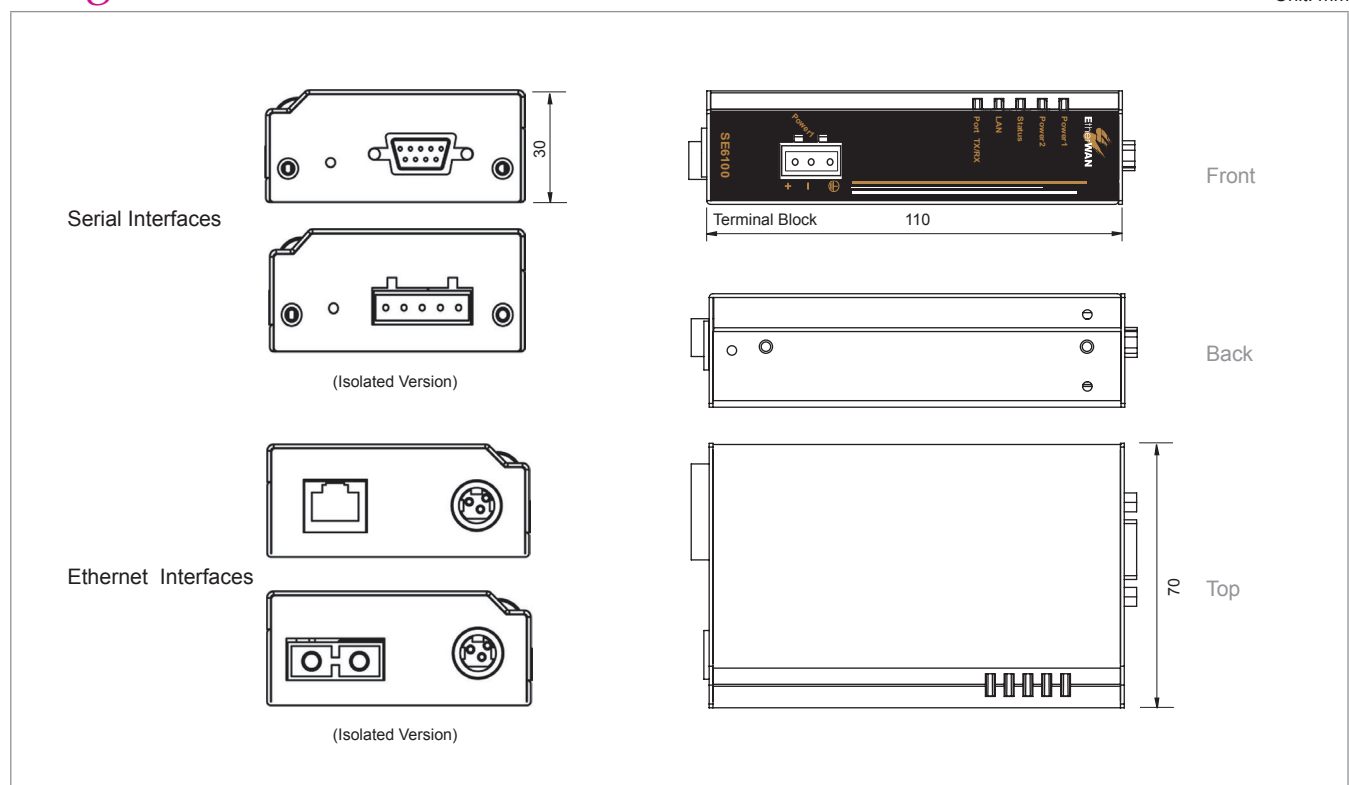
Specifications

Technology	
Serial Port	<ul style="list-style-type: none"> Interface: RS-232/422/485 Connector: DB9 for RS-232/422/485 (Male) Terminal Block for RS-422/485 Line Protection: 15KV ESD Isolation: 2KV (SE6110)
Serial Communication Parameters	<ul style="list-style-type: none"> Parity: None, Even, Odd, Space, Mark Data Bits: 5, 6, 7, 8 Stop Bit: 1, 1.5, 2 Flow Control: None, RTS/CTS, Xon/Xoff Speed: SE6101, 50 bps to 460.8Kbps SE6110, 50 bps to 230.4Kbps
Protocols	<ul style="list-style-type: none"> ICMP, IP, TCP, UDP, DHCP client, Telnet, DNS, SNMPv2, HTTP, SMTP, SNTP, ARP, RARP, RFC2217
Operation mode	<ul style="list-style-type: none"> Virtual COM, TCP server, TCP client, UDP, Pair Connection
OS Driver Support	<ul style="list-style-type: none"> Windows 2000/XP/2003 COM driver
Management	<ul style="list-style-type: none"> Web, Telnet console, SNMP
Memory Buffer	<ul style="list-style-type: none"> 256K bits
Power	
Input	<ul style="list-style-type: none"> Input Voltage: 12 to 32VDC (Terminal Block); 12VDC (DC Jack)
Power Consumption	<ul style="list-style-type: none"> 2.88W Max. 0.24A @ 12VDC, 0.12A @ 24VDC
Connector	<ul style="list-style-type: none"> Terminal Block and DC Jack with latch
Mechanical	
Casing	<ul style="list-style-type: none"> Aluminum case
Dimensions	<ul style="list-style-type: none"> 70mm (W) x 110mm (D) x 30 mm(H) (2.76" (W) x 4.33" (D) x 1.18" (H))
Weight	<ul style="list-style-type: none"> 0.25kg (0.55 lb)
Installation	<ul style="list-style-type: none"> DIN-Rail (Top hat type 35mm), Panel Mounting

Interface	
Ethernet Port	<ul style="list-style-type: none"> Interface: 10/100BASE-TX; 100BASE-FX Connector: RJ45 (10/100BASE-TX); SC, ST Type (100BASE-FX) Isolation: Built-in 1.5KV magnetic isolation
Serial Port	<ul style="list-style-type: none"> DB9- RS232/422/485: 1 port or 5Pin Terminal Block (Isolation version) RS422/485: 1 port
LED Indicators	<ul style="list-style-type: none"> Per Unit: Power Status (Power 1, Power 2), Status Per Port: Ethernet: LAN1, Serial: Port TX/RX
Environment	
Operating Temperature	<ul style="list-style-type: none"> 10/100BASE-TX Interface: -34°C to 75°C (-29.2°F to 167°F) 100BASE-FX Interface: -25°C to 75°C (-13°F to 167°F)
Storage Temperature	<ul style="list-style-type: none"> 10/100BASE-TX Interface: -34°C to 85°C (-29.2°F to 185°F) 100BASE-FX Interface: -25°C to 85°C (-13°F to 185°F)
Ambient Relative Humidity	<ul style="list-style-type: none"> 5% to 95% non-condensing
Regulatory Approvals	
Emission Compliance	<ul style="list-style-type: none"> CE Mark Class A FCC Part 15 Class A VCCI Class A

Diagrams

Unit: mm



Specifications

Technology	
Serial Port	<ul style="list-style-type: none"> Interface: RS-232/422/485 Connector: DB9 for RS-232/422/485 (Male) Terminal Block for RS-422/485 Line Protection: 15KV ESD Isolation: 2KV (SE5110)
Serial Communication Parameters	<ul style="list-style-type: none"> Parity: None, Even, Odd, Space, Mark Data Bits: 5, 6, 7, 8 Stop Bit: 1, 1.5, 2 Flow Control: None, RTS/CTS, Xon/Xoff Speed: SE5101, 50 bps to 460.8Kbps SE5110, 50 bps to 230.4Kbps
Protocols	<ul style="list-style-type: none"> ICMP, IP, TCP, UDP, DHCP client, Telnet, DNS, SNMPv2, HTTP, SMTP, SNTP, ARP, RARP, RFC2217
Operation mode	<ul style="list-style-type: none"> Virtual COM, TCP server, TCP client, UDP, Pair Connection
OS Driver Support	<ul style="list-style-type: none"> Windows 2000/XP/2003 COM driver
Management	<ul style="list-style-type: none"> Web, Telnet console, SNMP
Memory Buffer	<ul style="list-style-type: none"> 256K bits
Power	
Input	<ul style="list-style-type: none"> Input Voltage: 12 to 32VDC (Terminal Block); 12VDC (DC Jack)
Power Consumption	<ul style="list-style-type: none"> 2.88W Max. 0.24A @ 12VDC, 0.12A @ 24VDC
Connector	<ul style="list-style-type: none"> Terminal Block and DC Jack with latch
Mechanical	
Casing	<ul style="list-style-type: none"> Aluminum case
Dimensions	<ul style="list-style-type: none"> 70mm (W) x 110mm (D) x 30 mm(H) (2.76" (W) x 4.33" (D) x 1.18" (H))
Weight	<ul style="list-style-type: none"> 0.25kg (0.55 lb)
Installation	<ul style="list-style-type: none"> DIN-Rail (Top hat type 35mm), Panel Mounting

Interface	
Ethernet Port	<ul style="list-style-type: none"> Interface: 10/100BASE-TX; 100BASE-FX Connector: RJ45 (10/100BASE-TX); SC, ST Type (100BASE-FX) Isolation: Built-in 1.5KV magnetic isolation
Serial Port	<ul style="list-style-type: none"> DB9- RS232/422/485: 1-port or 5Pin Terminal Block (Isolation Version) RS422/485: 1 port
LED Indicators	<ul style="list-style-type: none"> Per Unit: Power Status (Power 1, Power 2), Status Per Port: Ethernet: LAN1, Serial: Port TX/RX
Environment	
Operating Temperature	<ul style="list-style-type: none"> -10°C to 60°C (14°F to 140°F) Test @ -20°C to 70°C (-4°F to 158°F)
Storage Temperature	<ul style="list-style-type: none"> -20°C to 85°C (-4°F to 185°F)
Ambient Relative Humidity	<ul style="list-style-type: none"> 5% to 95% non-condensing
Regulatory Approvals	
Emission Compliance	<ul style="list-style-type: none"> CE Mark Class A FCC Part 15 Class A VCCI Class A

Diagrams

Unit: mm

